

Installation Guide

Symantec Endpoint Protection
Symantec Management Agent



Table of Contents

1. Prerequisites.....	2
2. Installation over Internet.....	3

1. Prerequisites

Unless otherwise specified, all updates, editions, and Service Packs (SPs) for a listed Windows version are supported, e.g. Windows 7 = Windows 7 Home Premium, Professional, and Ultimate editions, all SPs. As Microsoft releases new Service Packs for Windows, these requirements may need to be re-evaluated--the newest Service Pack may require an updated version of the Symantec Product.

	Minimum Requirements
Processor	<ul style="list-style-type: none"> 32-bit processor for Windows: 1-GHz Intel Pentium III or equivalent minimum (Intel Pentium 4 or equivalent recommended) 64-bit processor for Windows: 2-GHz Pentium 4 with x86-64 support or equivalent minimum. Itanium processors are not supported.
Physical RAM	<ul style="list-style-type: none"> 512 MB of RAM, or higher if required by the operating system
Hard drive	<ul style="list-style-type: none"> Hard disk: 700 MB or more free space
Display	<ul style="list-style-type: none"> 800 x 600
Operating System	<ul style="list-style-type: none"> Windows XP Home or Professional (32-bit, SP2 or later; 64-bit, all SPs) Windows XP Embedded Windows Vista (32-bit, 64-bit) Windows 7 (32-bit, 64-bit, RTM and SP1) Windows Server 2003 (32-bit, 64-bit, R2, SP1 or later) Windows Small Business Server 2003 (32-bit) Windows Server 2008 (32-bit, 64-bit, R2, SP1, and SP2) Windows Small Business Server 2008 (64-bit) Windows Essential Business Server 2008 (64-bit) Windows Small Business Server 2011 (64-bit)
Others	<ul style="list-style-type: none"> Administrative right account on Computer Internet Explorer 7 or 8 Internet Explorer settings enabled to download of ActiveX controls User Account Control is disabled on Windows Vista, Windows 7

2 Installation over Internet

- 2.1 From Internet Explorer, browse to
- 2.2 Symantec AV client

MOE SEP – 32BIT

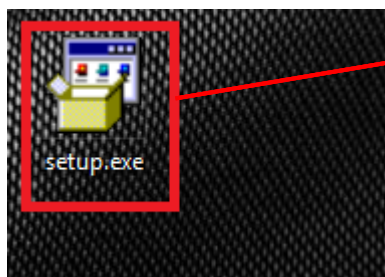
http://sepm.ytleducation.com.my:8014/EmailInstallPackages/7A1187620A1C820E0103358D708CE618_WIN32BIT/sep/Setup.exe

MOE SEP – 64BIT

http://sepm.ytleducation.com.my:8014/EmailInstallPackages/7A1187620A1C820E0103358D708CE618_WIN64BIT/sep/Setup.exe

- 2.3 Double click on the installation file to begin installation.

SEP client installation



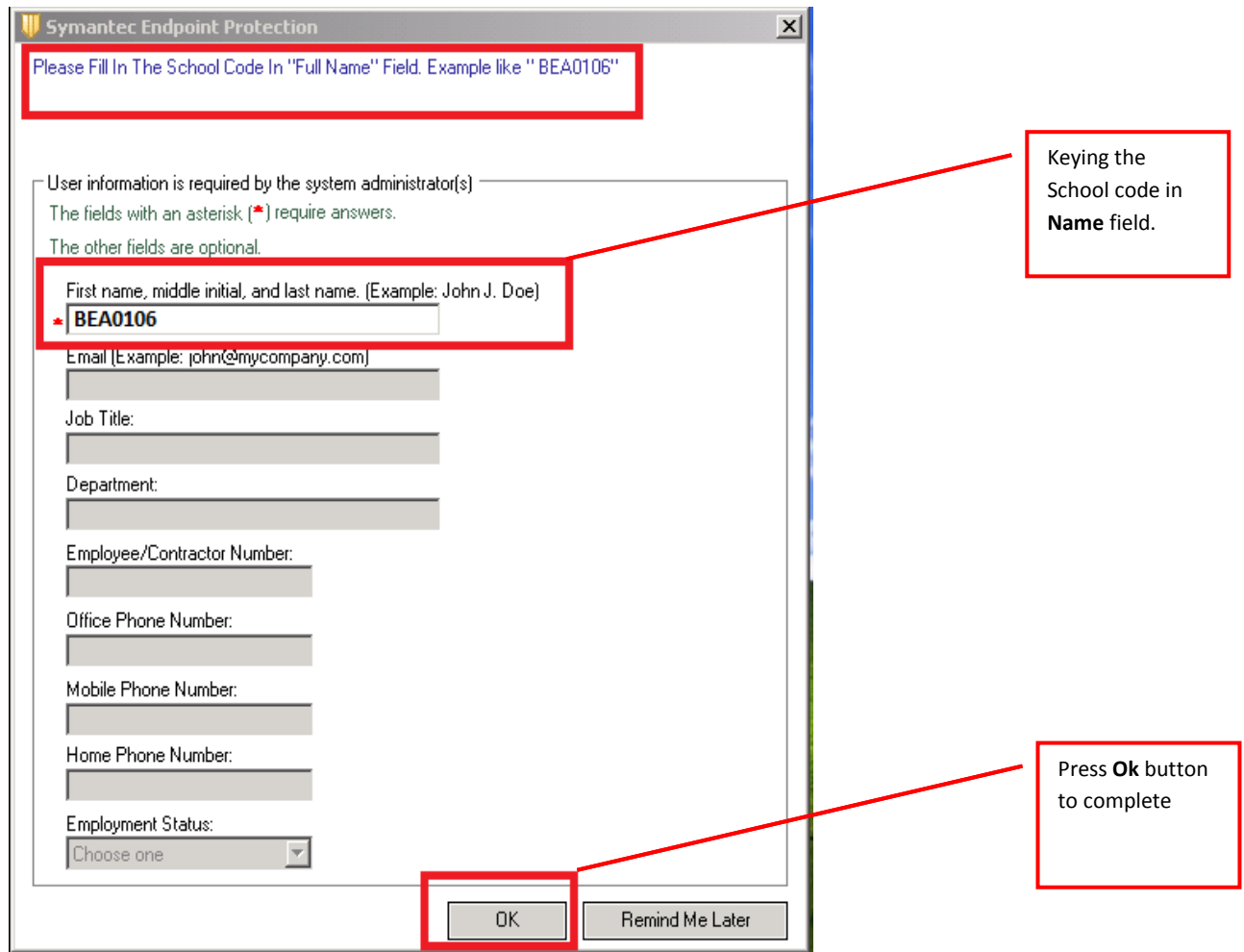
Double click to begin installation

- 2.4 If you have User Access Control (UAC) enabled (for Windows Vista and Windows 7), click on **Yes** to allow the installation.

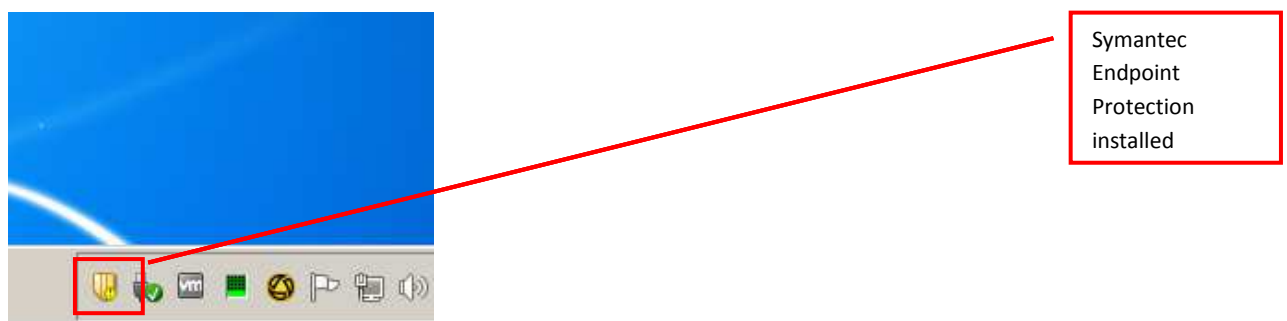


Click on **Yes** button

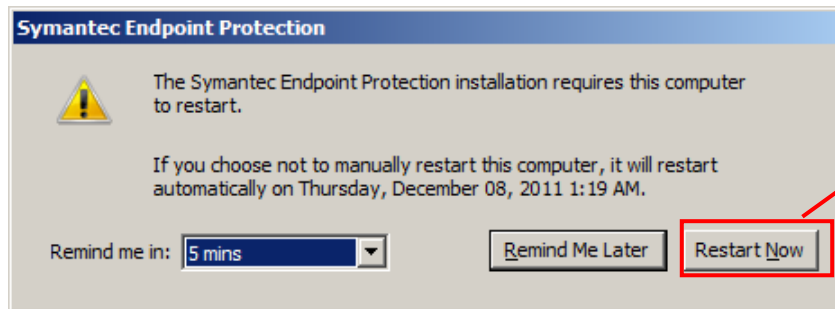
2.5 Symantec will prompt to keying the “user information”. Please keying the School code as BTP & BTPN



2.6 The Symantec Endpoint Protection icon will appears on the Windows taskbar icon after installation is completed. You can reboot your computer to complete the installation.

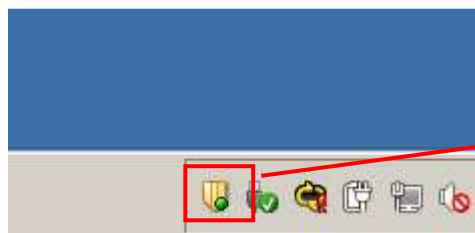


2.7 Click “Restart Now” to restart your computer to complete the installation.



Click **Restart Now** to restart your computer.

2.8 After your computer is restarted, you will see the Symantec Endpoint Protection icon on the Windows taskbar.



Symantec Endpoint Protection installed

2.9 Double-click on the icon and you will see that Symantec Endpoint Protection is installed successfully and your computer is protected.

